

EXECUTIVE SUMMARY REPORT

SUN PRAIRIE ELEMENTARY SCHOOLS: Meadow View Elementary School 06/01/2018

What's New?

At Meadow View, the gravel for the parking lots has been graded and asphalt will be poured next week! Landscaping will start in a couple of weeks, along with the installation of the playground. Inside the building, the gymnasium received bleachers this week. The 4th/5th grade classroom wing received carpet and wood doors this week, and next the final coat of paint will be applied. Carpet is now being installed in the administration offices, and then it will be installed on the 2nd floor. On the 2nd floor, the curtain wall window was installed in the library along with the remaining light fixtures. Finally, the building's pre-punch has begun in the classroom wings to make sure that every detail is spot-on before students and teachers arrive!

The Past Weeks

- Gymnasium bleachers began installation
- Carpeting installed in the 4th/5th grade wing
- Lights hung in the library
- Punch list began in the classroom wings

Coming Up in the Weeks Ahead

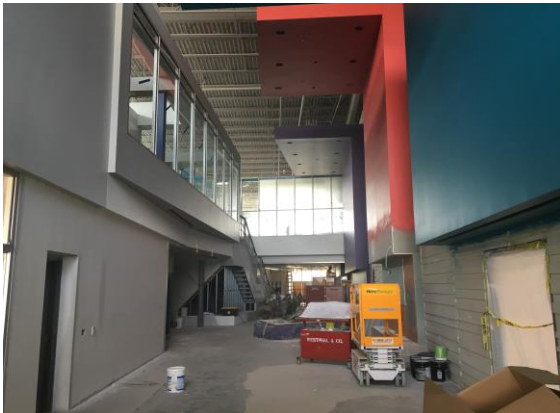
- Start installing resilient flooring in the classroom wings and hallways
- Asphalt paving for the parking lots
- Pour the monument sign
- Hang the stage curtain
- Begin the building final clean and continue punch lists



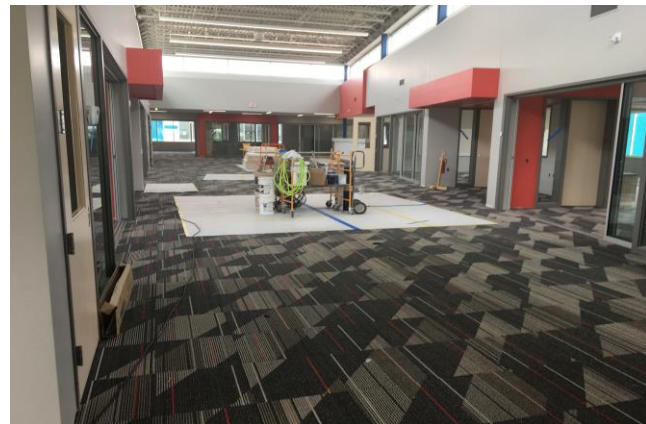
The lot for the basketball courts and playground is graded and ready to be paved!



Toilet partitions are installed in all of the bathrooms throughout the school.



The overhanging cloud soffits at the main entrance are now painted, and the interior windows are installed.



The 4th/5th grade wing received carpet and doors this week, and will receive the final coat of paint by next week!



Did you know? Parent and bus pickup/drop off traffic are clearly or completely separated on both new elementary school sites to reduce traffic congestion and provide a safer, more efficient traffic flow for students, parents, staff and community use. Also, a first responder drive loop around the building has been included at both elementary school sites to allow immediate access to the entire building in case of emergency.

EXECUTIVE SUMMARY REPORT

SUN PRAIRIE ELEMENTARY SCHOOLS

06/01/2018



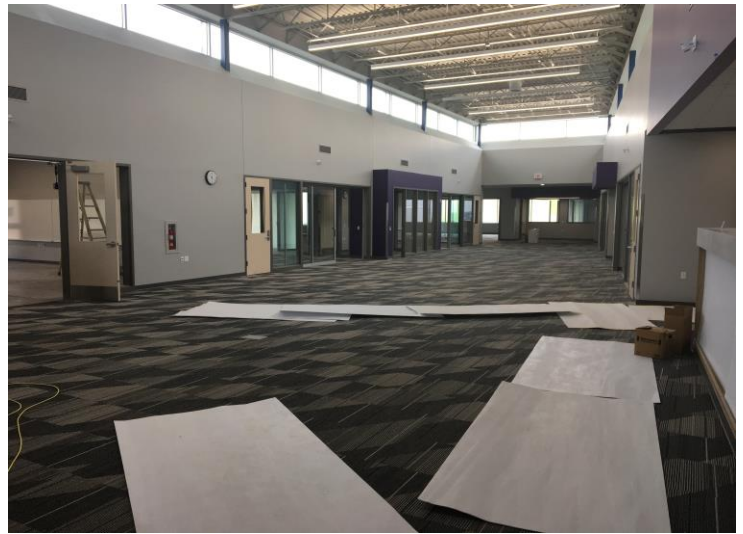
On the 2nd floor, the loading dock has been replaced with the large windows. This will allow lots of natural light into the library!



The bleachers in the gym are being installed, and the scoreboard will arrive next!



This aerial photograph from our drone last week shows that the school is only a little over a month away from completion! The asphalt will be poured next week to finish the parking lots.



The central collaboration space within each classroom wing is designed to be an extension of the learning areas that surround it. Glass in between these areas will provide for direct supervision and improved visible communication for students and staff.