

# EXECUTIVE SUMMARY REPORT

## SUN PRAIRIE ELEMENTARY SCHOOLS: Meadow View Elementary School 04/20/2018

### What's New?

Despite the snow this week, Meadow View Elementary School braved the cold and made great progress towards completion! The wood floor in the gym is receiving its top layer, which is a maple wood finish, and soon it will be complete. In the kitchen, the fluid-applied flooring was received, and the kitchen equipment, such as the sinks and ovens, arrived this week and are being installed. Over in the classroom wings, the plumbers are busy installing toilets and sinks while the electricians finish setting up lights. The 2<sup>nd</sup> floor art room and library are taped and ready for paint. Once painted, the carpenters will start installing the 2<sup>nd</sup> floor casework!

### The Past Weeks

- Gymnasium floor is in progress. The base layer has been applied, and the top layer is currently being installed!
- Fluid-applied flooring installed in the kitchen
- Bathroom floor tile and fixtures received in the first floor bathrooms
- Ceiling tile dropped in the kindergarten/first grade classrooms

### Coming Up in the Weeks Ahead

- Paint the 2<sup>nd</sup> floor art room, maker space, and library
- Finish installation of the gym floor
- Start installing the sliding glass doors in the classrooms
- Begin site work once the snow is melted!



Casework installation in progress in the administrative offices.



In the art room, as well as other rooms on the 2<sup>nd</sup> floor, MEP rough-ins and insulation are finishing up to get ready for paint!



Ceiling tile was dropped in the kindergarten/1<sup>st</sup> grade classrooms this week, and the other classroom wings will follow shortly!



The music room shown here also functions as a tornado shelter during bad weather! The fun fact below talks more about this room and its safety measures.



**Did you know?** Although the music room is dedicated to instruments and singing, it also functions as a refuge room for inclement weather. It was specifically designed to have extra fortification in the case of strong storms and tornados. The masonry walls are reinforced with steel bracings that provide immense amounts of strength. There is also a garage door that protects the room's window during a storm. In the case of a bad storm, this room will be an extremely strong and safe shelter!

---

# EXECUTIVE SUMMARY REPORT

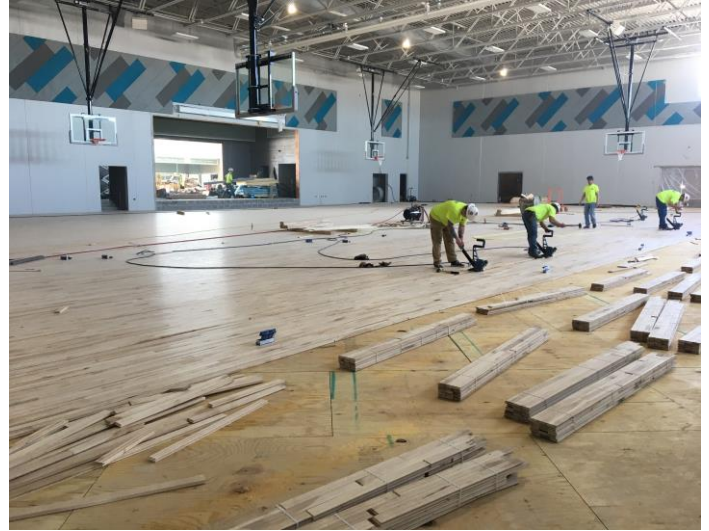
## SUN PRAIRIE ELEMENTARY SCHOOLS

04/20/2018

---



*In the kitchen, sinks and other equipment have arrived and are in the process of being installed!*



*The gym floor installation is in progress and almost complete! Here, the crew is applying the maple wood top layer to the base layer. After the top layer is installed, court lines will be painted!*



*The overhanging clouds at the main entrance are drywalled. Once they are painted, they will be a great looking feature for students walking into school!*



*Floor tile, toilets, and sinks have been installed in the first floor bathrooms. The plumbers will move to the second floor in the next couple of weeks.*