

EXECUTIVE SUMMARY REPORT

SUN PRAIRIE ELEMENTARY SCHOOLS: Token Springs Elementary School 04/27/2018

What's New?

Token Springs has had a very busy last couple of weeks! Metal panels were received at the main entrance and at the exterior of the art room, so the panels are very close to being completely installed! Inside the building, the wood floor in the gym began installation this week and will be done in about 3 weeks. The art room and library on the second floor are painted, and the painters are waiting for the ELRC to be taped and prepped before starting to paint there. Carpet has been installed in the cubby alcove in all of the classroom wings; now the focus will be to mount lights and ceiling tile in the wings, and then finish the carpeting and flooring in the classrooms!

The Past Weeks

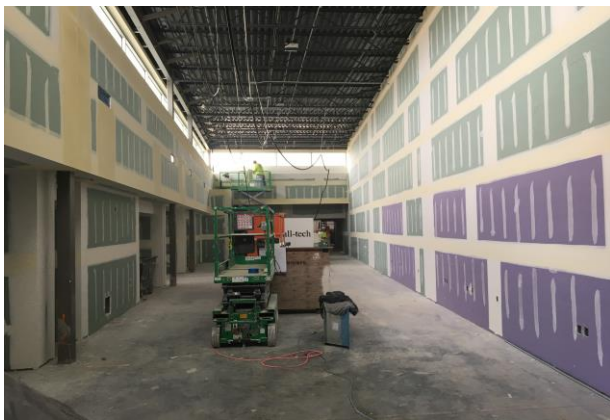
- Finished drywall and started taping in the ELRC
- Exterior site grading continued
- Casework received in the administration offices
- Began installing the wood floor in the gym
- Carpet, lights, and fixtures installed in the kindergarten/1st grade wing
- **Coming Up in the Weeks Ahead**
- Start painting the ELRC
- Continue carpet and Resilient Flooring in the grade wings
- Finish installing kitchen equipment
- Begin installation of the sliding glass Kawneer doors in the classrooms
- Setting up security locks on office doors



Metal panels have been installed on the exterior wall of the library.



In the kitchen, stainless steel walls have been installed where the dishwasher is located. Here, two crew members are busy installing a sink in the dishwasher room!



Drywall has been received in the ELRC, and now the tapers are busy prepping the walls for paint!



The classroom wings are getting the finishing touches. Here you can see the wood doors installed, and the sliding glass doors will follow.



Did you know? It's quite a process to install a gym floor, and the wood floor at Sun Prairie is no exception! First, a vapor guard, which is a thick plastic material, must be laid on top of the concrete. The vapor guard protects against moisture from the concrete and ensures the floor doesn't deteriorate. Then, a plywood layer is installed over the vapor guard. After the plywood layer, the top layer is put on! The top layer is planks of maple wood that have pads on the bottom to give the floor a little "bounce" to it. After all of the layers are in place, the floor is sealed and painted and then ready for use!

EXECUTIVE SUMMARY REPORT

SUN PRAIRIE ELEMENTARY SCHOOLS

04/27/2018



The wood floor installation started in the gym this week! First, the base layer is laid down, and then next week the top coat that is made of maple wood will be installed!



The art room and library are being painted. It's one of the last areas to receive paint before the entire building is painted!



Sitework is continuing at the school, as site grading started this past week. The soccer field and baseball field were leveled off so that landscaping can begin, and the parking lot was leveled so that asphalt can be poured soon!



Carpet is installed in the classroom wing cubby areas, as well as in the kindergarten/1st grade classrooms!