

EXECUTIVE SUMMARY REPORT

SUN PRAIRIE ELEMENTARY SCHOOLS: Meadow View Elementary School

05/04/2018

What's New?

Now that the snow is melted, Meadow View has started site work! Curb and gutter was poured this week, and the next step will be to pave the asphalt. Also, the patio by the cafeteria was built. Inside the building, the 2nd floor has been painted so that casework can be installed there next week. The gymnasium floor is almost complete, as the top layer has been sealed– the only remaining step is to finish painting the game lines! Meanwhile, the classroom wings are close to completion as well. Lights and ceiling tile were dropped in the 2nd/3rd grade classrooms this week, and carpeting will be installed there next week. Finally, the glass sliding doors in the classrooms will start installation within the next few weeks!

The Past Weeks

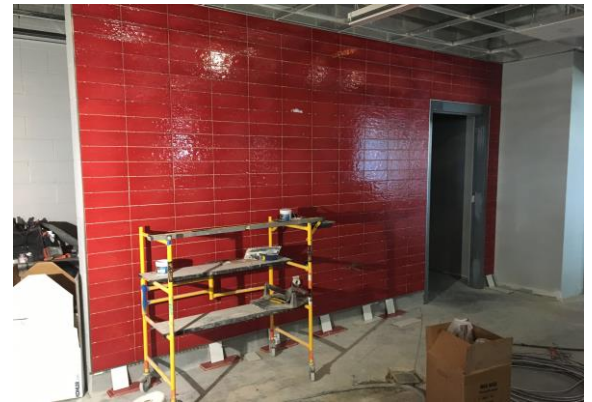
- Gymnasium floor sealed and lines are being painted
- Ceiling tile dropped in 2nd/3rd grade classroom
- 2nd floor art room and library painted
- Exterior curb and gutter poured
- Finish putting in toilets and fixtures in the 2nd floor bathrooms

• Coming Up in the Weeks Ahead

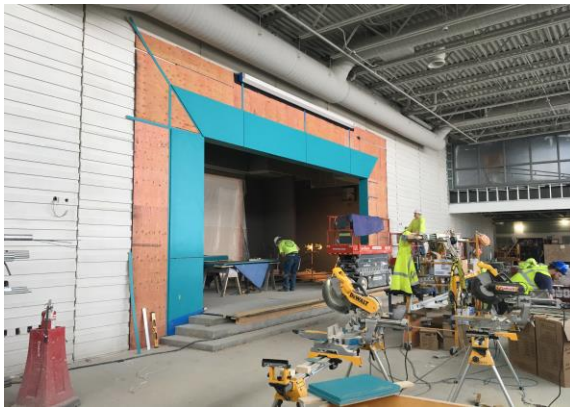
- Install casework in the art room and library
- Finish painting lines on the gym floor
- Start installing the sliding glass doors in the classrooms
- Begin carpeting the classrooms



The patio by the cafeteria has been poured, and it will let kids enjoy lunch outside on nice days!



Bathroom wall tile is being installed in the 4th/5th grade classroom wings.



Colored wood panels are being received around the border of the stage.



On the 2nd floor, the library and art room are being painted. After this, the painters will begin applying final coats to all of the walls in the school!



Did you know? With all of the water runoff that comes with melting snow, there needs to be an erosion control plan in place to control this runoff. At Meadow View, there are two retention ponds to hold water. Various ditches and dikes are strategically placed to direct water into these ponds, keeping the site from flooding! Also, the perimeter of the site has large silt fences that prevent dirt from spilling into neighboring houses, yards, and fields, ensuring that unwanted dirt does not affect surrounding areas. There is a lot of planning that goes into controlling erosion at Meadow View!

EXECUTIVE SUMMARY REPORT

SUN PRAIRIE ELEMENTARY SCHOOLS

05/04/2018



In the kitchen, the stainless steel dishwasher and sinks are installed and ready to clean those dirty dishes!



The gym floor installation is in progress and almost complete! The top layer has been sealed, and now the game lines are being painted!



Site work is making great progress! This week, curb and gutter concrete was installed, paving the way for the asphalt to be poured.



In the 2nd/3rd grade classroom, almost all of the finishes are complete! Lights and lockers are installed, ceiling tile is dropped, and drinking fountains are in. The only remaining component is carpet, which will be starting next week!