

EXECUTIVE SUMMARY REPORT

SUN PRAIRIE ELEMENTARY SCHOOLS: Meadow View Elementary School

05/18/2018

What's New?

Site work at Meadow View has ramped up and progressed rapidly! All of the curb and gutter is installed, and the light poles have been erected as well. Now, the gravel is being graded and asphalt will be poured in a couple of weeks! Inside, the classrooms are receiving carpet and doors. The gym floor is painted, and the bleachers and scoreboard will be arriving soon. In the main entrance hallway, the painters are finishing the overhanging cloud soffits. Lights are being installed in the library, and the electricians will move to the cafeteria once they are finished there! Punch list will begin in the month of June, which is the final step in the construction process before the building is turned over!

The Past Weeks

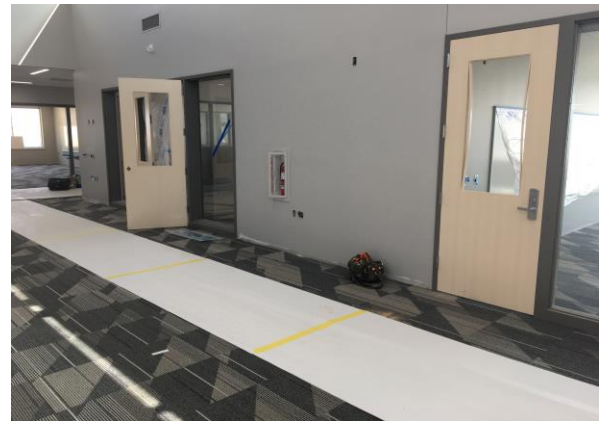
- Gymnasium floor polished and painted
- Carpeting installed in the kindergarten/1st grade and 2nd/3rd grade wings
- Exterior curb and gutter finished pouring
- Casework installed in the art room and library

Coming Up in the Weeks Ahead

- Continue installing the sliding glass doors in the classrooms
- Install carpet in the 4th/5th grade classroom wing
- Continue installing lights in the library and cafeteria
- Install the front office area storefront doors
- Begin initial startup of HVAC equipment



The grass is growing, the light poles are installed, and the school is very close to completion!



The classroom wings have begun to receive doors and hardware!



The overhanging cloud soffits at the main entrance are being taped and prepped for paint.



Casework is now installed in the art room, and the walls are painted as well. The kiln is arriving soon and then the art room will be complete!



Did you know? There is a firewall in both schools that is constructed with CMU block and filled with cement grout. This wall spans the entire width and is also the tallest wall in the building. How cool! The reason it is called a "firewall", is due if the event of a fire, it will not allow the fire to spread to the other section of the building. Since the wall is constructed of such heavy blocks and cement grout, it will not allow the fire to penetrate and burn. Think of it as a big divider wall!

EXECUTIVE SUMMARY REPORT

SUN PRAIRIE ELEMENTARY SCHOOLS

05/18/2018



On the 2nd floor, windows and lights are being installed. The lights are arranged in various patterns, and are different shapes and sizes, creating an aura of natural light.



The gym floor is painted! All that remains in the gym is the scoreboard and bleacher installation!



Site work is making great progress! This week, curb, gutter, and sidewalks were installed, along with light poles.



Carpet is laid in the kindergarten/1st grade and the 2nd/3rd grade classroom wings. This photo shows the hallway in the kindergarten/1st grade wing!